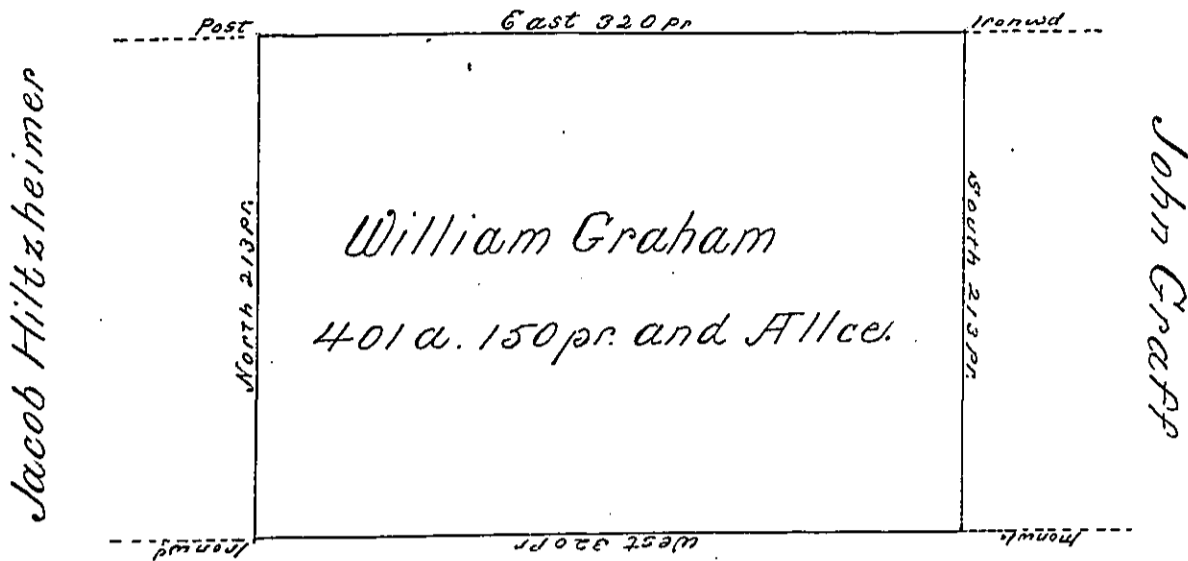


Near the district line No. 1.



Ashbell Green

Situate on the west side of French Creek in Allegheny County containing 401 acres and 150 pr. and allowance of six pcent for Roads &c. Surveyed the 9th day of October 1794 In pursuance of a warrant bearing date the 30th day of May 1792.

Wm. Power Dy Sr.
 To Daniel Brodhead Esqr. }
 Surveyor General }

IN TESTIMONY that the above is a copy of the original remaining on file in the Department of Internal Affairs of Pennsylvania, made conformably to an Act of Assembly approved the 16th day of February, 1833, I have hereunto set my Hand and caused the Seal of said Department to be affixed at Harrisburg, this third day of October 1899

James W. Pitta
 Secretary of Internal Affairs.